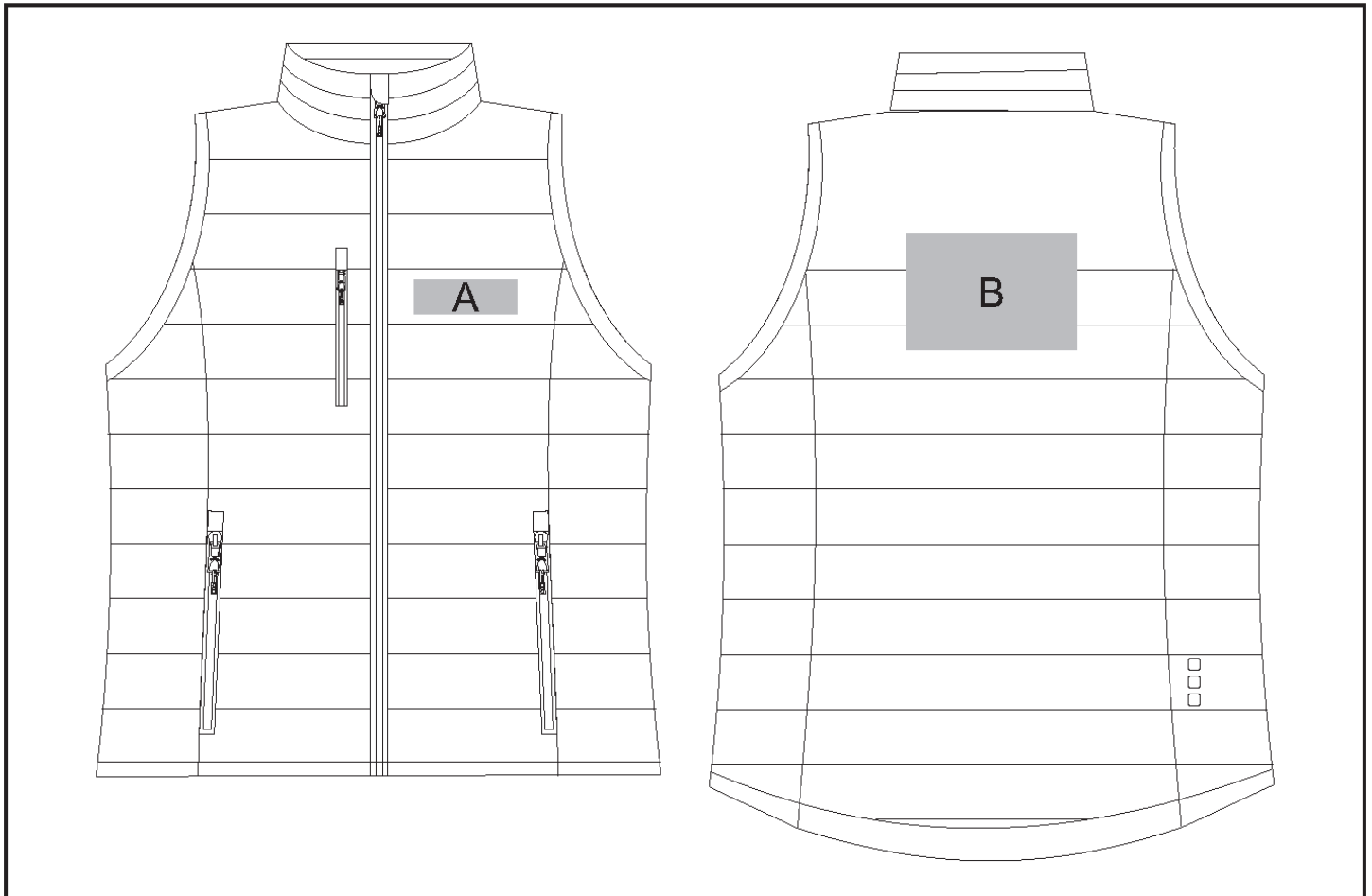


# ELE-7411

## Ladies Scotia Bodywarmer



### Need to know:

- Includes 1-Position Embroidery (setup fee applies)
- EMB/DTC inclusive parameters: Left/Right Chest or Back = 100mm x 100mm
- NB: Inclusive Branding is NOT applicable to Items marked as Reduced to Clear.
- Cannot guarantee a 100% straight branding on any clothing item with check or stripe detail.
- The panels on the garment are inconsistent from Small to XL.
- The logo will be branded in the closest left / right chest and back panel, to the standard left / right chest and back position.

### Branding Options:

<b>Position</b>	<b>Branding Method (Branding Code)</b>	<b>No. of Colours</b>	<b>Dimension</b>
A	Embroidery (EM-CLOTHING)		90mm wide x 30mm high
B	Embroidery (EM-CLOTHING)		150mm wide x 100mm high