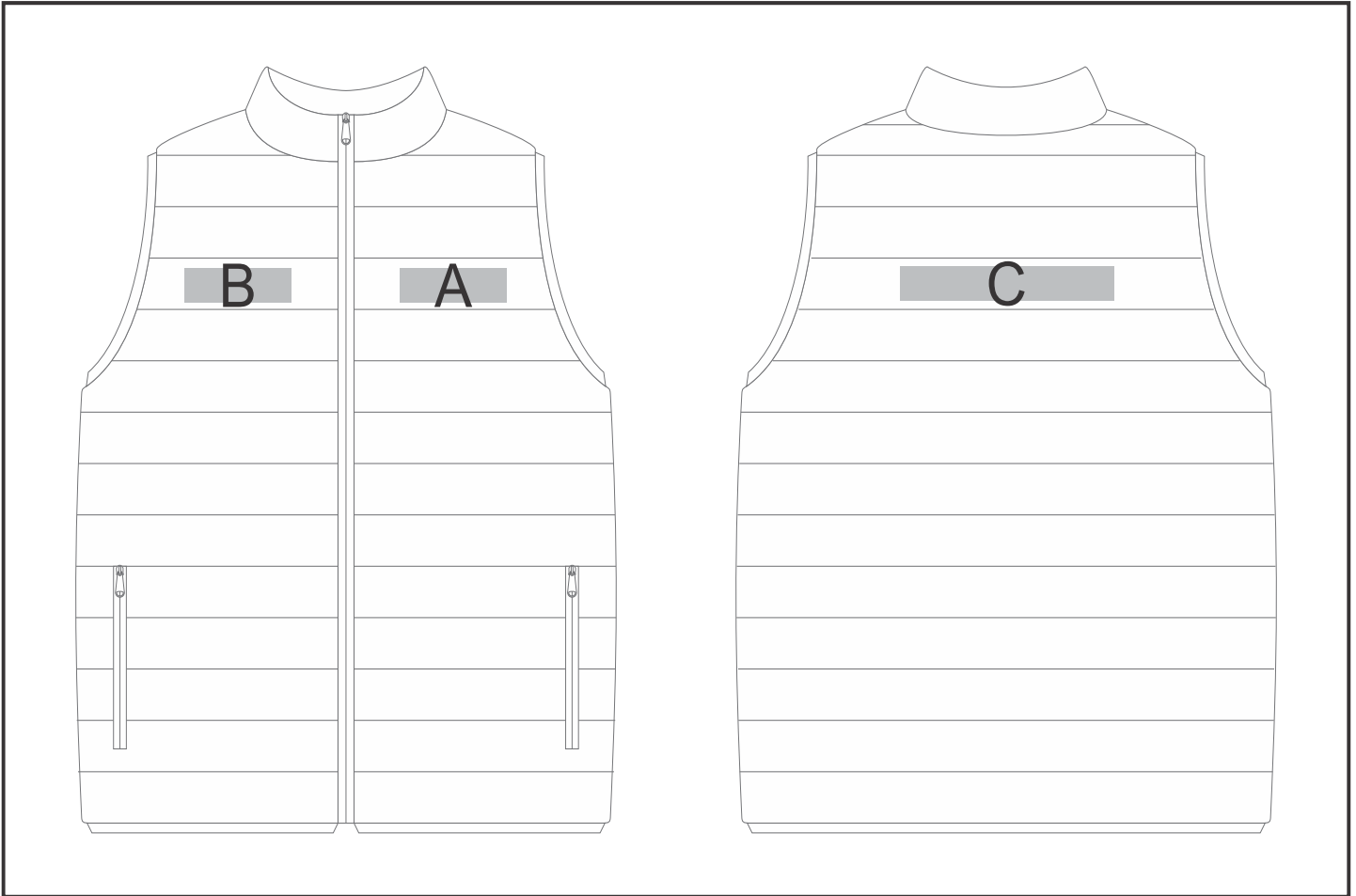


BD-EL-22-A

Mens Utah Bodywarmer



Need to know:

Includes 1-Position Embroidery (setup fees apply)

- **EMB Inclusive Parameters:** Left/Right Chest or Back = 100mm x 100mm
- Cannot guarantee a 100% straight branding on any clothing item with check or stripe detail.
- The panels on the garment are inconsistent from Small to XL.
- The logo will be branded in the closest left / right chest and back panel, to the standard left/right chest and back position.
- No Excess Zip, Branding will be through the Lining of the Jacket.

Branding Options:

Position	Branding Method (Branding Code)	No. of Colours	Dimension
A	Embroidery (EM-CLOTHING)	N/A	100mm wide x 30mm high
B	Embroidery (EM-CLOTHING)	N/A	100mm wide x 30mm high
C	Embroidery (EM-CLOTHING)	N/A	200mm wide x 30mm high