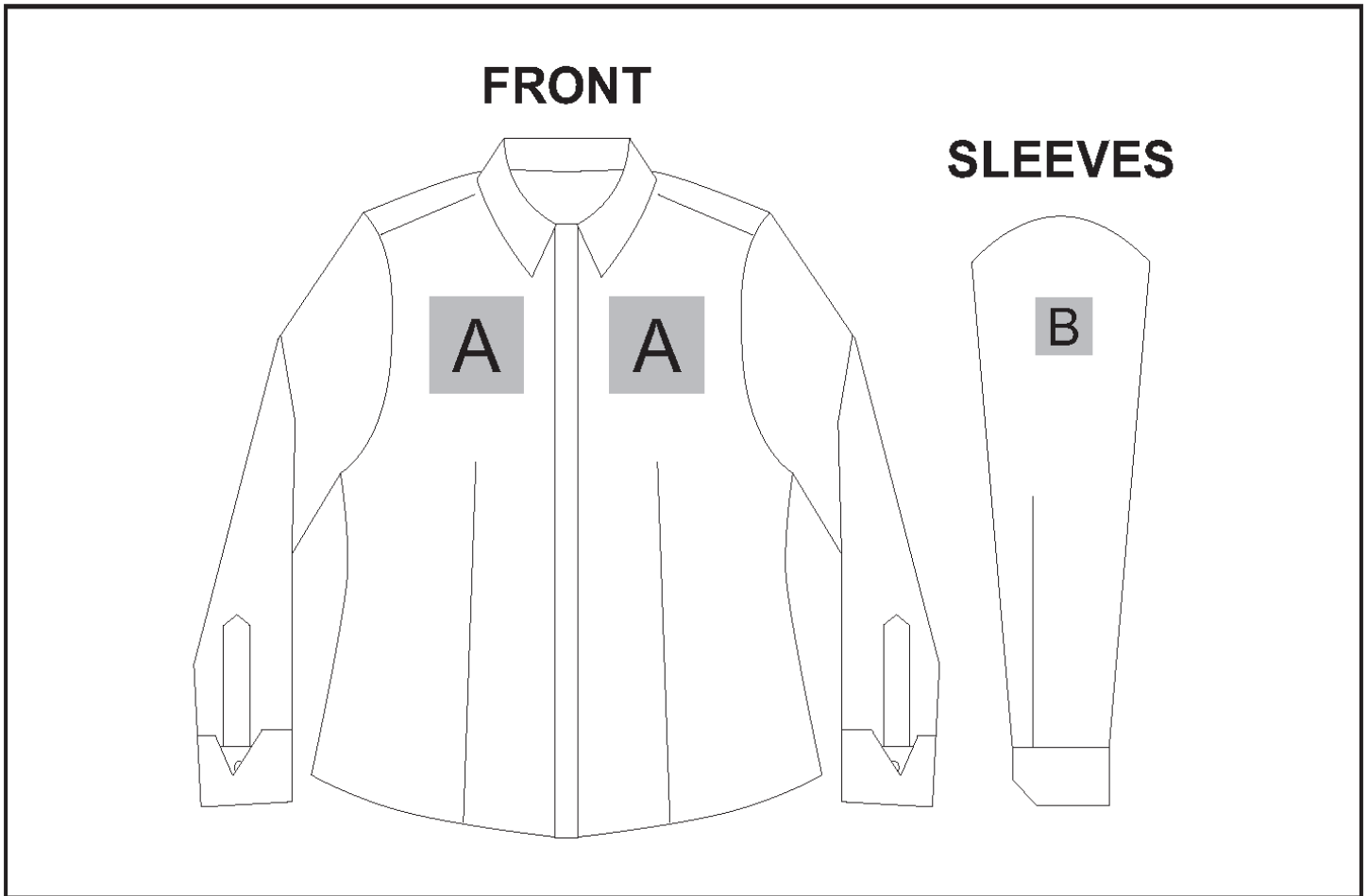


GP-11603

Ladies Long Sleeve Taylor Shirt



Need to know:

- Includes 1-Position Embroidery OR 1-Position Digital Transfer (setup fees apply)
- Cannot guarantee a 100% straight branding on any clothing item with check or stripe detail.
- No branding on back due to seam.
- DTC/EMB inclusive Parameters: Left/Right Chest or Back = 100mm x 100mm

Branding Options:

Position	Branding Method (Branding Code)	No. of Colours	Dimension
A	Embroidery (EM-CLOTHING)		100mm wide x 100mm high
A	Digital Transfer Clothing A6 (DTC-A6)	Full Colour	100mm wide x 100mm high
A	Screen Print (SA)	6 Colours	100mm wide x 80mm high

B	Embroidery (EM-CLOTHING)		50mm wide x 50mm high
B	Digital Transfer Clothing A6 (DTC-A6)	Full Colour	50mm wide x 50mm high

B

Screen Print (SA)

6 Colours

80mm wide x 60mm high