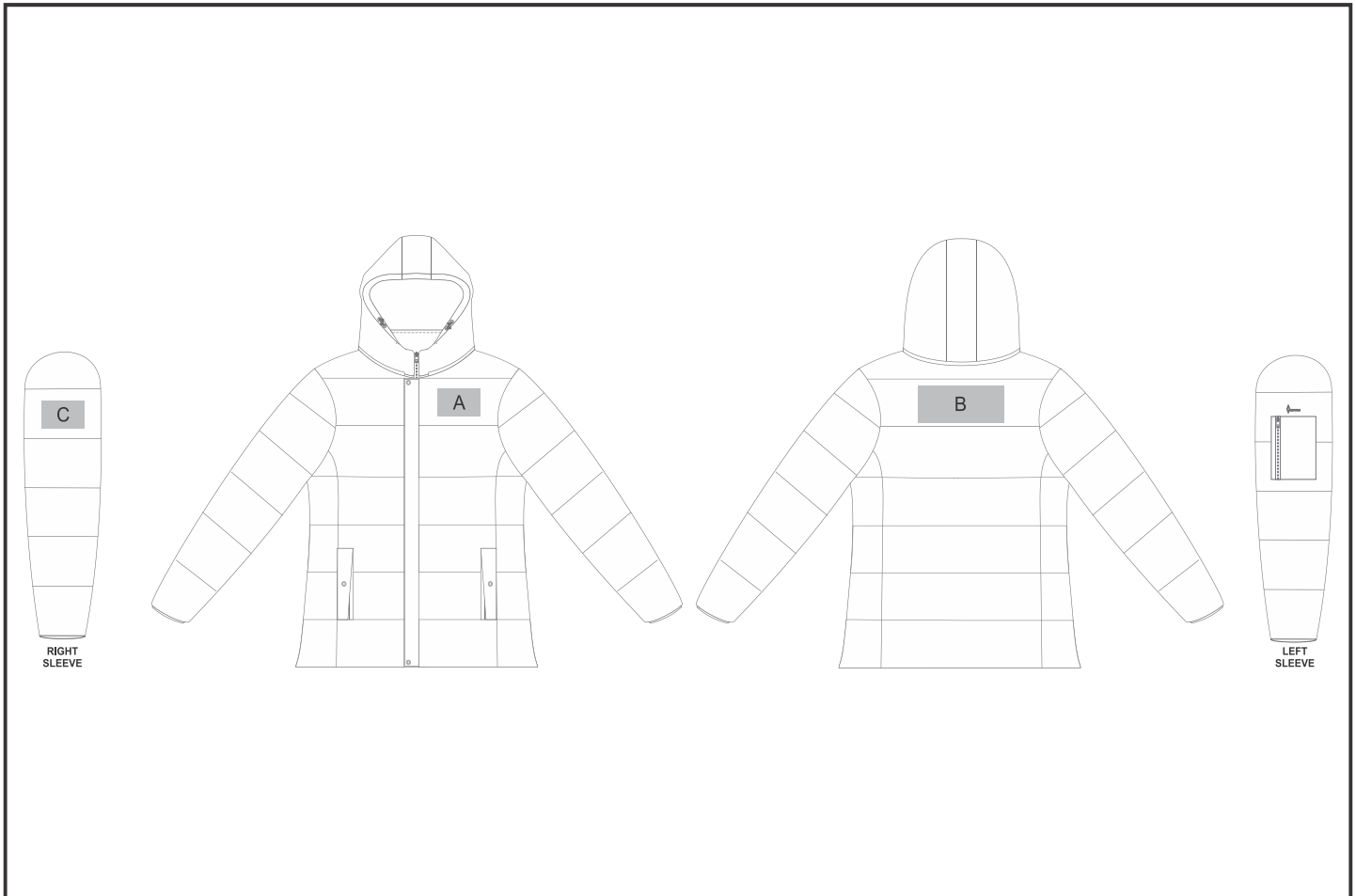


# JC-AV-129-A

## Ladies Alex Varga Montpellier Jacket



### Need to know:

- Includes 1-Position Embroidery (setup fees apply)
- **EMB inclusive parameters:** Left/Right Chest or Back = 100mm x 100mm
- EMB: No Branding on Right Chest and Left Sleeve.
- The panels on the garment are inconsistent from Small to XL.
- The logo will be branded in the closest left chest and back panel, to the standard left chest and back position.

### Branding Options:

Position	Branding Method (Branding Code)	No. of Colours	Dimension
A	Embroidery (EM-CLOTHING)	N/A	100mm wide x 100mm high
A	Digital Transfer Clothing A6 (DTC-A6)	Full Colour	100mm wide x 100mm high
A	Silicone (STP-A)	N/A	30mm wide x 30mm high
A	Silicone (STP-B)	N/A	50mm wide x 50mm high

A	Silicone (STP-C)	N/A	80mm wide x 80mm high
---	------------------	-----	-----------------------

B	Embroidery (EM-CLOTHING)	N/A	150mm wide x 80mm high
B	Digital Transfer Clothing A6 (DTC-A6)	Full Colour	148mm wide x 80mm high
B	Digital Transfer Clothing A5 (DTC-A5)	Full Colour	150mm wide x 80mm high
B	Silicone (STP-A)	N/A	30mm wide x 30mm high
B	Silicone (STP-B)	N/A	50mm wide x 50mm high
B	Silicone (STP-C)	N/A	80mm wide x 80mm high
B	Silicone (STP-D)	N/A	120mm wide x 40mm high

C	Digital Transfer Clothing A6 (DTC-A6)	Full Colour	80mm wide x 50mm high
C	Silicone (STP-A)	N/A	30mm wide x 30mm high
C	Silicone (STP-B)	N/A	50mm wide x 50mm high