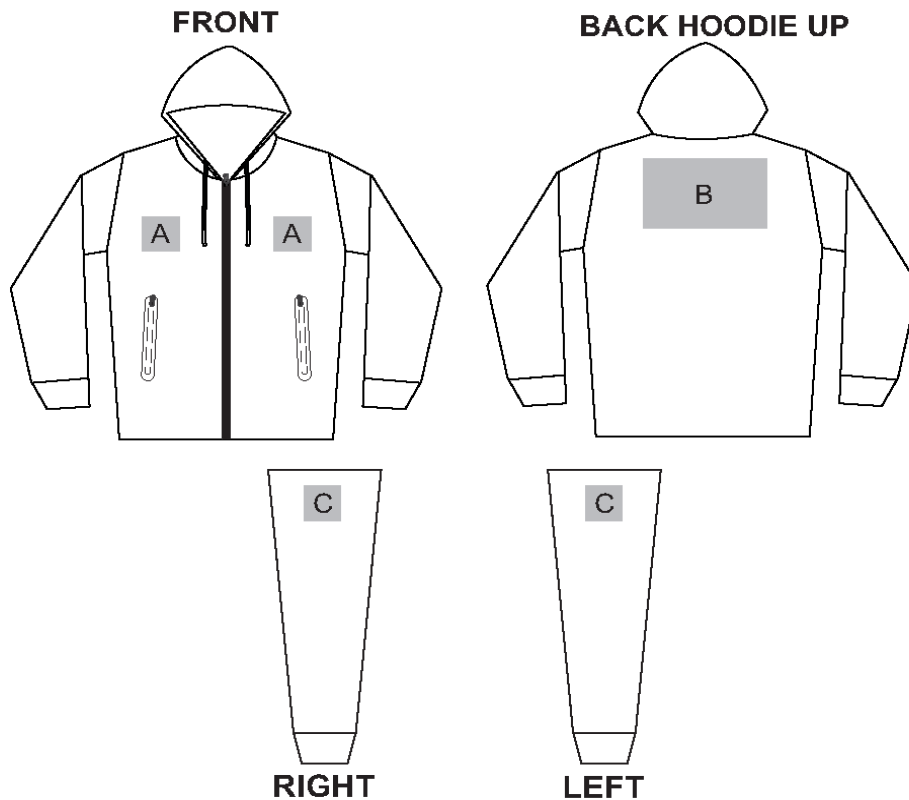


SLAZ-11429

Ladies Maxx Jacket



Need to know:

Need to know:

- Includes 1 Position Embroidery (setup fee applies)
- Cannot guarantee a 100% straight branding on any clothing item with check or stripe detail.
- The panels on the garment are inconsistent from Small to XL.
- The logo will be branded in the closest left / right chest and back panel, to the standard left/right chest and back position.
- DTC/EMB inclusive Parameters: Left/Right Chest or Back = 100mm x 100mm

Branding Options:

Position	Branding Method (Branding Code)	No. of Colours	Dimension
A	Embroidery (EM-CLOTHING)		100mm wide x 100mm high
A	Digital Transfer Clothing A6 (DTC-A6)	Full Colour	100mm wide x 100mm high
A	Screen Print (SC)	6 Colours	100mm wide x 60mm high

B	Embroidery (EM-CLOTHING)		100mm wide x 100mm high
B	Screen Print (SC)	6 Colours	240mm wide x 150mm high
B	Digital Transfer Clothing A5 (DTC-A5)	Full Colour	210mm wide x 148mm high

C	Embroidery (EM-CLOTHING)		50mm wide x 50mm high
C	Digital Transfer Clothing A6 (DTC-A6)	Full Colour	50mm wide x 50mm high
C	Screen Print (SC)	6 Colours	60mm wide x 60mm high