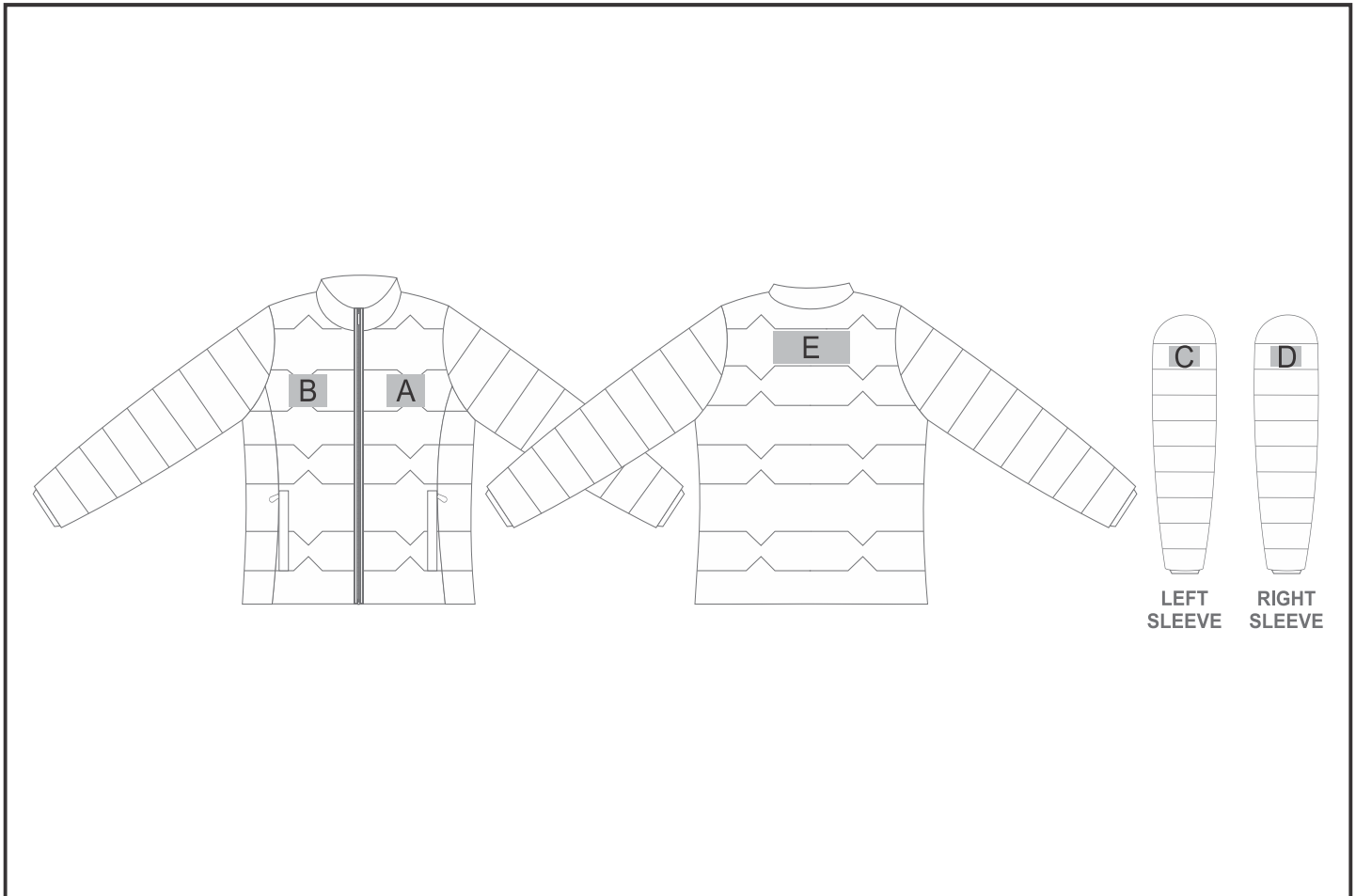


JC-UB-135-A

Ladies Stratus Jacket



Need to know:

- Includes 1-Position Embroidery (setup fees apply)
- **EMB inclusive parameters:** Left/Right Chest or Back = 100mm x 100mm
- The panels on the garment are inconsistent from Small to XL.
- The logo will be branded in the closest left / right chest and back panel, to the standard left/right chest and back position
- Cannot guarantee a 100% straight branding on any clothing item with check or stripe detail
- Please note that branding may go over the triangle panels
- If logo is made higher than 20mm, logo will be branded over stitch lines.

Branding Options:

Position	Branding Method (Branding Code)	No. of Colours	Dimension
A	Embroidery (EM-CLOTHING)	N/A	100mm wide x 20mm high
A	Digital Transfer Clothing A6 (DTC-A6)	Full Colour	100mm wide x 100mm high
B	Embroidery (EM-CLOTHING)	N/A	100mm wide x 20mm high

B	Digital Transfer Clothing A6 (DTC-A6)	Full Colour	100mm wide x 100mm high
C	Digital Transfer Clothing A6 (DTC-A6)	Full Colour	80mm wide x 50mm high
D	Digital Transfer Clothing A6 (DTC-A6)	Full Colour	80mm wide x 50mm high
E	Embroidery (EM-CLOTHING)	N/A	120mm wide x 80mm high
E	Digital Transfer Clothing A6 (DTC-A6)	Full Colour	148mm wide x 80mm high
E	Digital Transfer Clothing A5 (DTC-A5)	Full Colour	200mm wide x 148mm high