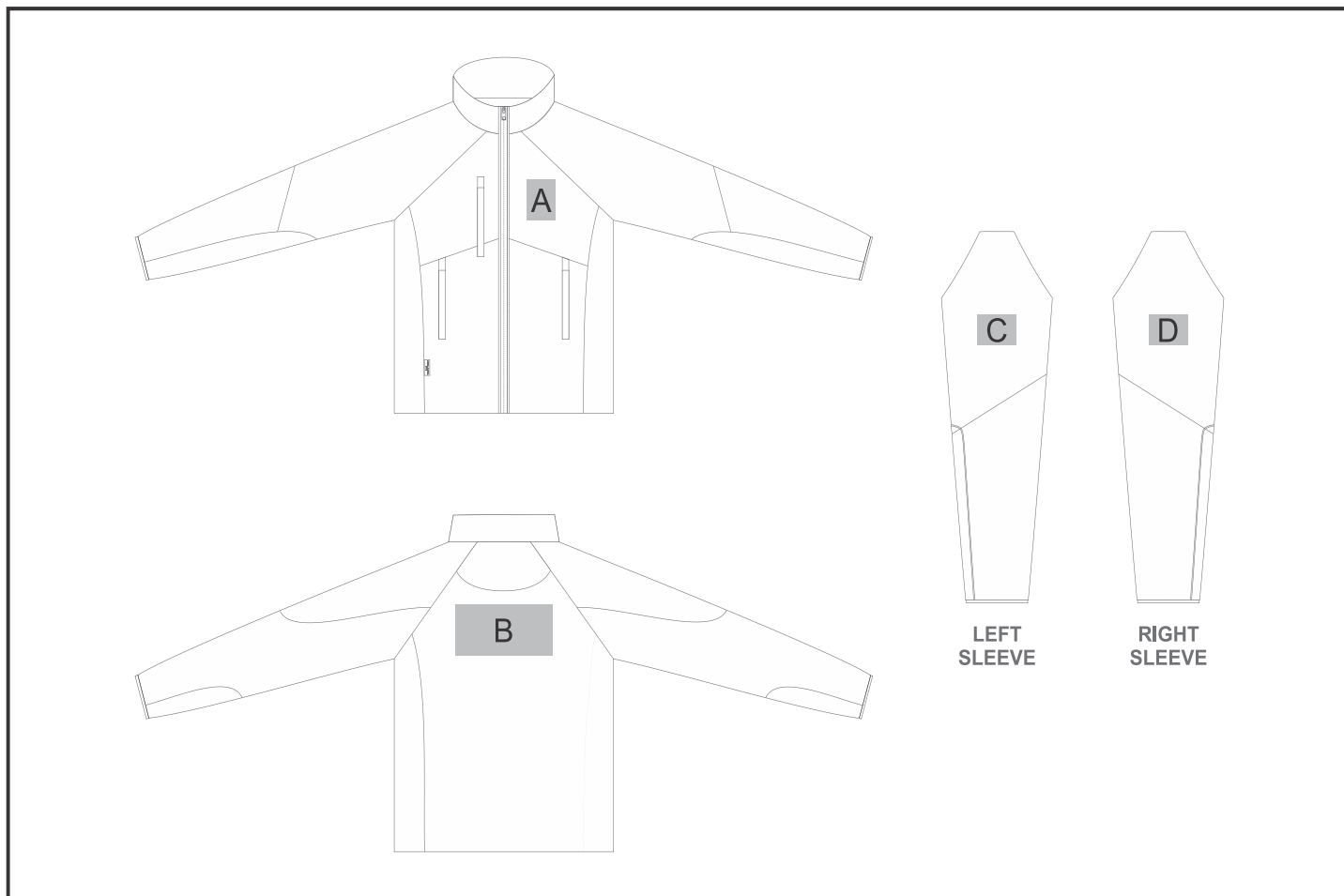


# JC-UT-143-A

## Ladies Midlands Softshell Jacket



### Need to know:

- Includes 1-Position Embroidery (setup fees apply)
- **EMB inclusive Parameters:** Left/Right Chest or Back = 100mm x 100mm

### Branding Options:

Position	Branding Method (Branding Code)	No. of Colours	Dimension
A	Embroidery (EM-CLOTHING)	N/A	60mm wide x 80mm high
B	Embroidery (EM-CLOTHING)	N/A	200mm wide x 100mm high
C	Embroidery (EM-CLOTHING)	N/A	80mm wide x 60mm high
D	Embroidery (EM-CLOTHING)	N/A	80mm wide x 60mm high